

# System for Monitoring Timber Harvesting (Simex)

## Mapping of area submitted to logging in BRAZILIAN AMAZON - August 2021 to July 2022

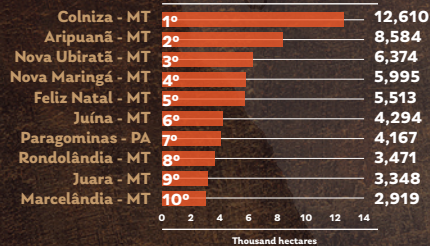
Between August 2021 and July 2022, Simex network mapped 394,616 hectares of forestlands submitted to logging in the Brazilian Amazon. This represents a 4.5% increase in the area harvested in the region compared to the previous period, when 377,624 hectares were mapped. By cross-referencing the logged forest mapped and the data from the logging authorizations we identified that 73% (288,139 hectares) were formally harvested with due authorizations. The remaining 27% (106,477 hectares) were carried out unauthorizedly. Most of the illegal harvesting (60.9%) occurred in private rural properties, which public agencies register and are subject to inspection and law enforcement. It is worrisome that ¼ of the harvested area non-authorized occurred in protected areas, 19% (20,725 hectares) in indigenous lands, and 6.1% (6,492 hectares) in conservation units. A situation that threatens these areas and the lives of traditional peoples and communities that are linked to these forests.

**TIMBER HARVESTING** total **394.617** hectares

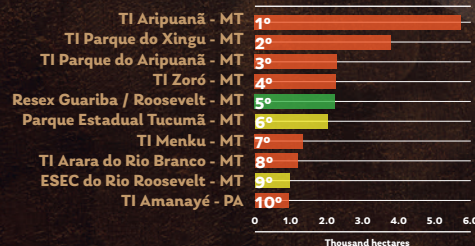
**UNAUTHORIZED LOGGING: 73%**  
**288.140** hectares

**AUTHORIZED LOGGING: 27%**  
**106.477** hectares

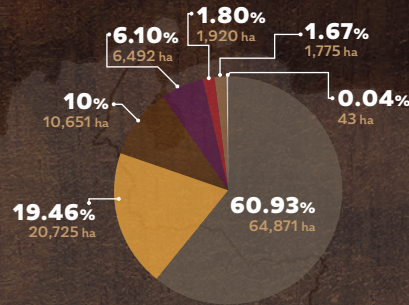
### 10 MUNICIPALITIES with the most NON-AUTHORIZED LOGGING



### PROTECTED AREAS with the most NON-AUTHORIZED LOGGING



### UNAUTHORIZED logging by LAND CATEGORY



- Registered rural properties
- Indigenous lands
- Conservation Units
- Lacking land titles
- Agrarian reform settlements
- Non-assigned lands
- Other classes

### HISTORY OF LOGGING IN THE STATE

Total in hectares

	2020	2021	2022
AC	27,455	10,886	25,667
AM	71,091	14,976	50,448
AP	730	0*	0*
MT	234,290	277,048	259,620
PA	50,139	57,079	38,552
RO	68,729	16,377	18,659
RR	9,458	1,258	1,671
<b>TOTAL</b>	<b>461,892</b>	<b>377,624</b>	<b>394,617</b>

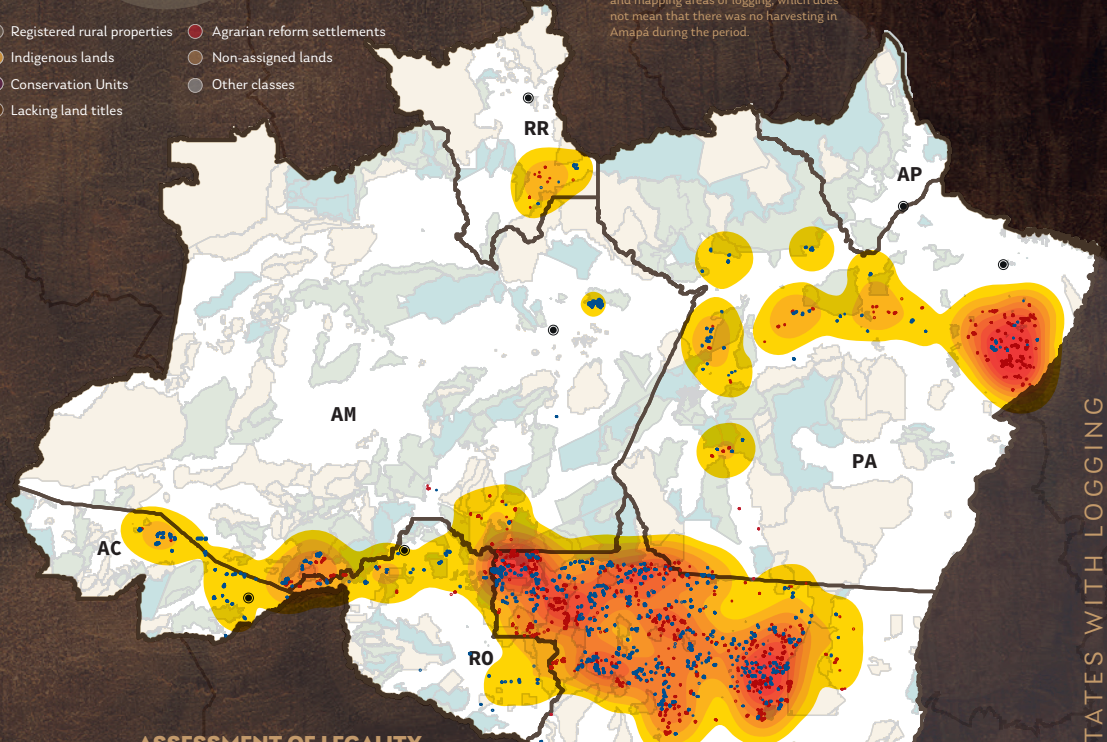
\*The high percentage of cloud cover in the period evaluated did not allow identifying and mapping areas of logging, which does not mean that there was no harvesting in Amapá during the period.



**TOTAL MAPPED**

**394,617 HECTARES**

of timber harvesting. That is a **4.5%** increase in relation to 2021.



### ASSESSMENT OF LEGALITY

Access to public data is slowly improving, which has allowed for the second consecutive year to assess how much harvested forest in the Amazon was authorized by environmental agencies. The data used to verify the legality of logging activities were obtained from a database of logging authorizations made available by IBAMA (Brazilian Institute of the Environment and Renewable Natural Resources) through Sinaflor (National System for Controlling the Origin of Forestry Products), the Brazilian Forest Service (SFB), Simlam (Integrated Monitoring System and Environmental Licensing) of the states of Mato Grosso and Pará, Ideflor (Institute of Forestry Development and Biodiversity of the State of Pará) and directly with the Environmental Secretariats of the states of Acre and Rondônia. We highlight that the authorization data used is public, and its updates and changes are the responsibility of the environmental agencies.

### LEGEND

- State Capitals
- Indigenous Lands
- Full Protection UCs
- Sustainable Use UCs
- Non-authorized logging
- Authorized logging

Concentration of logged areas

RANKING OF STATES WITH LOGGING

